

blu**rams**

Wire-Free Video Doorbell D10C



User Manual

Packing list



1 x Video Doorbell



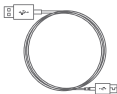
1 x Waterproof
Mounting Bracket



1 x Chime



1 x Screws Accessories
Kit

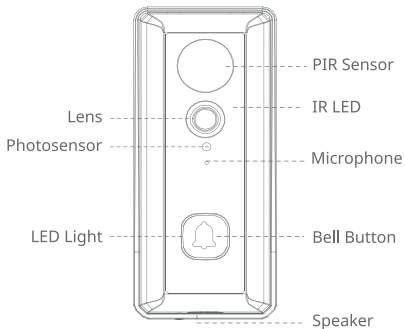


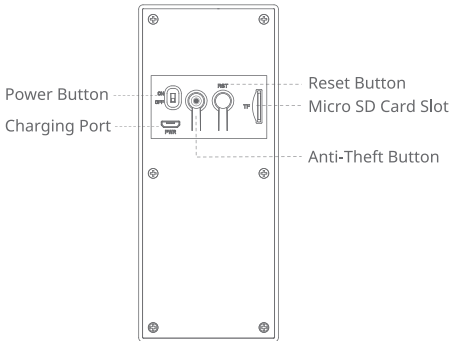
1 x USB Cable



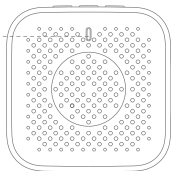
1 x User Manual

Get to konw your doorbell

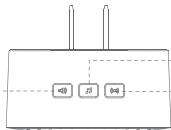




Indicator Light



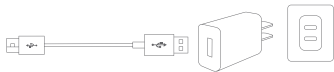
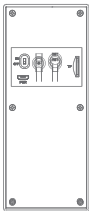
Volume Control Button



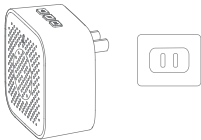
Ringtone Control Button
Pairing Button

1. Charge your video doorbell

Please use the provided USB cable and recommended 5V/1A power adapter (self-provided) to fully charge your doorbell.



Plug the chime into a suitable power socket indoors.



2. How to pair the doorbell with the chime?



Make sure the doorbell is fully charged and the chime is plugged, and place the doorbell and chime as close as possible during pairing.

Press the chime pairing button until hearing a sound, and then quickly press the doorbell bell button.

Unpair the chime and the doorbell.
Long press the chime pairing button to cancel the pairing of the doorbell and chime.



3. Download blurams App

Download the App by searching "blurams" in the App Store or Google Play. Alternatively, you can open a QR scanner App and scan the blurams App QR code below to install the App.
blurams App QR code

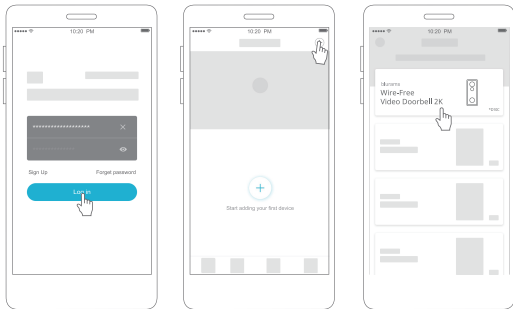


blurams App QR code



4. Add your doorbell into the App

Enter the blurams App, sign up for a free blurams account and log in. Go to the home page, click the "+" icon on the top right corner and select the model of your camera. Then follow the instructions to finish the device configuration.



FAQs

Does the doorbell support micro SD card?

Yes, it does. Please cut the power off when inserting/removing your micro SD card to ensure it can be recognized.

Why can't I add the doorbell to the App?

1. Please make sure the doorbell is fully charged and powers on. Long press the reset button till hearing a "beep" and then release the reset button. The red flashing LED light shows the doorbell is ready to pair.
2. Connect your smartphone and the doorbell to the same 2.4GHz Wi-Fi network (5GHz network is not supported currently).
3. Keep the doorbell, phone, and Wi-Fi router as close as possible during pairing.

Why can't the doorbell scan the QR code?

1. Remove the lens protective film and make sure there is no dust on the lens.
2. Adjust the smartphone screen brightness to high.
3. Tap the QR code picture to enlarge it.
4. Adjust the distance between the lens and screen, the optimal distance is 3 ~ 5 inches.

**How long does it take for the doorbell to be fully charged?
How long can a fully-charged doorbell last?**

1. Using a 5V/1A adapter, it takes about 5h to fully charge the doorbell.
2. And the battery usage time of the doorbell varies according to the times of doorbell being triggered.

Why is the captured video black and white?

1. Position the doorbell in a well-lit environment during the daytime.
2. Check "Preferences" to see if the night vision is ON.
3. Restart the doorbell and re-add it to the App.
4. If you continue seeing black and white or other abnormal colors after trying all the above solutions, please contact the support team for help.

Why won't the doorbell be turned on?

1. Please make sure the doorbell is fully charged.
2. Try using other power adapters and USB cables to charge the doorbell. (5V/1A or 5V/2A adapters are recommended)
3. If the problem persists, please contact the support team for help.

Can't hear sound from the doorbell?

1. Check "Preferences" to turn "Microphone" option on.
2. Remove the protective film, and try talk closer and louder to the doorbell.
3. Restart the doorbell.

Why is the live streaming video upside down?

In the blurams App, go to the device's "Preferences" and tap "Rotate 180°".

If you encounter any other problems in Product Information, Product Installation and Use, please refer to the "Mine > Help And Feedback" in the blurams App or email support@blurams.com.

Look forward to your feedback

blurams strives for offering high-quality products and thoughtful user experience, and we're eager to hear your feedback or suggestions. Feel free to send your feedback through the App or email support@blurams.com.



Notes:

1. Do not use the doorbell in any extreme weather environments such as extremely high, low temperatures, direct strong sunlight, or heavy rain for long periods of time. The suitable temperature for the product and accessories is -10°C to 50°C .
2. The recommended output voltage/current of the adapter is DC 5V/1A and DC 5V/2A, and the adapter should be CE approval type.
3. This product can be used across EU member states.

FCC Statement

This equipment has been tested and found to comply with the limits for a Class B digital device, pursuant to part 15 of the FCC rules. These limits are designed to provide reasonable protection against harmful interference in a residential installation. This equipment generates, uses and can radiate radio frequency energy and, if not installed and used in accordance with the instructions, may cause harmful interference to radio communications. However, there is no guarantee that interference will not occur in a particular installation. If this equipment does cause harmful interference to radio or television reception, which can be determined by turning the equipment off and on, the user is encouraged to try to correct the interference by one or more of the following measures:

- Reorientation or relocation of the receiving antenna
- Increase the separation between the equipment and receiver
- Connect the equipment into an outlet on a circuit different from that to which the receiver is connected
- Consult the dealer or an experienced radio/TV technician for help

To assure continued compliance, any changes or modifications not expressly approved by the party.

Responsible for compliance could void the user's authority to operate this equipment. (Example - use only shielded interface cables when connecting to computer or peripheral devices).

This equipment complies with Part 15 of the FCC Rules.

Operation is subject to the following two conditions:

- (1) This device may not cause harmful interference, and
- (2) This device must accept any interference received, including interference that may cause undesired operation.

FCC Radiation Exposure Statement:

The equipment complies with FCC Radiation exposure limits set forth for uncontrolled environment. In order to avoid the possibility of exceeding the FCC radio frequency exposure limits, human proximity to the antenna shall not be less than 20cm during normal operation.

FCC ID: 2ASAQD10C

Congratulations!

Your doorbell is ready to use. Thank you for choosing blurams.



blurams Facebook



blurams Instagram

support@blurams.com

www.blurams.com